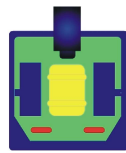


Offer to  
c/o:  
Pictures of B-750, page 1/5  
BEMACO B 750-120/A-20  
Ident-Nr.:



**BEMACO ENGINEERING**

...NEWEST TECHNOLOGY FOR USED BLOWMOULDING MACHINES

# BEMACO ENGINEERING B - 750



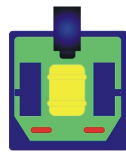
## **BLOW MOULDING MACHINE B-750**

**BEMACO ENGINEERING GMBH & Co. KG**

Benteler Straße 31  
33449 Langenberg / Germany  
Tel.: +49 (0) 52 48-81 11 00  
Fax: +49 (0) 52 48-81 11 09

[info@bemaco-engineering.de](mailto:info@bemaco-engineering.de)  
[www.bemaco-engineering.de](http://www.bemaco-engineering.de)

Offer to  
c/o:  
Pictures of B-750, page 2/5  
BEMACO B 750-120/A-20  
Ident-Nr.:



**BEMACO ENGINEERING**

...NEWEST TECHNOLOGY FOR USED BLOWMOULDING MACHINES

# B E M A C O E N G I N E E R I N G B - 7 5 0



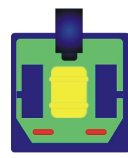
## **BLOW MOULDING MACHINE B-750**

**BEMACO ENGINEERING GMBH & Co. KG**

Benteler Straße 31  
33449 Langenberg / Germany  
Tel.: +49 (0) 52 48-81 11 00  
Fax: +49 (0) 52 48-81 11 09

[info@bemaco-engineering.de](mailto:info@bemaco-engineering.de)  
[www.bemaco-engineering.de](http://www.bemaco-engineering.de)

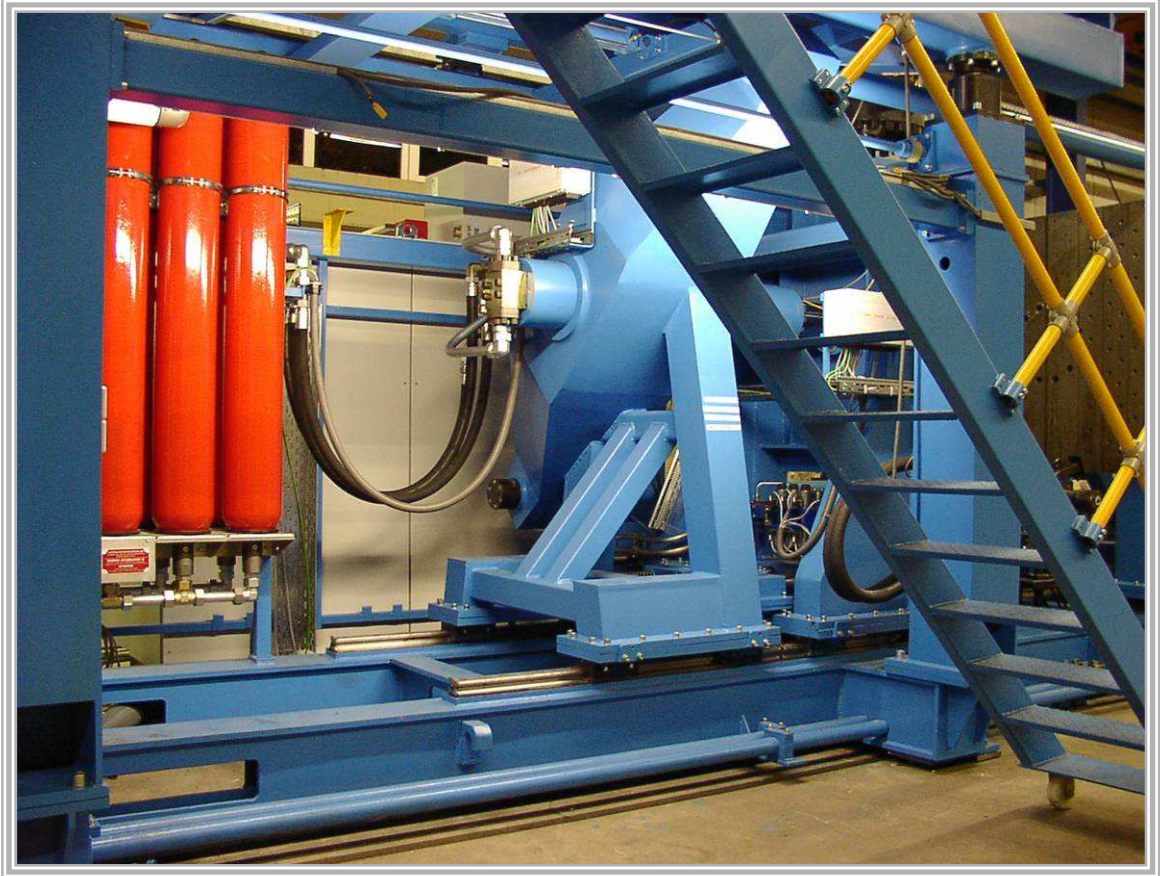
Offer to  
c/o:  
pictures of B-750, page 3/5  
BEMACO B 750-120/A-20  
Ident-Nr.:



**BEMACO ENGINEERING**

...NEWEST TECHNOLOGY FOR USED BLOWMOULDING MACHINES

# B E M A C O E N G I N E E R I N G B - 7 5 0

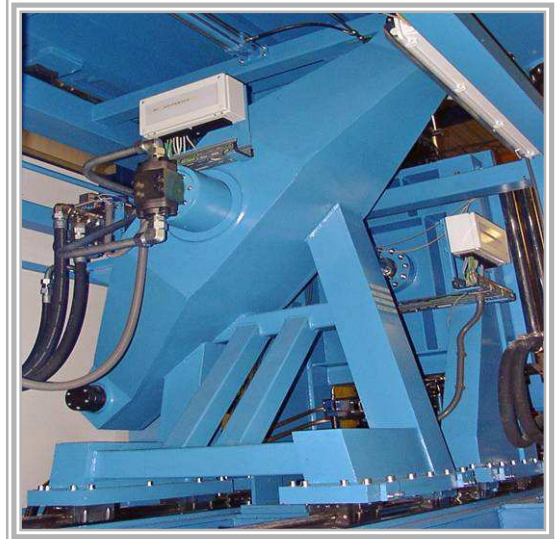


**B-750: view inside machine frame**

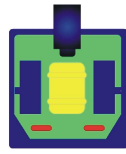
**B-750: hydraulic with accumulators**



**B-750: clamping unit (detail view)**



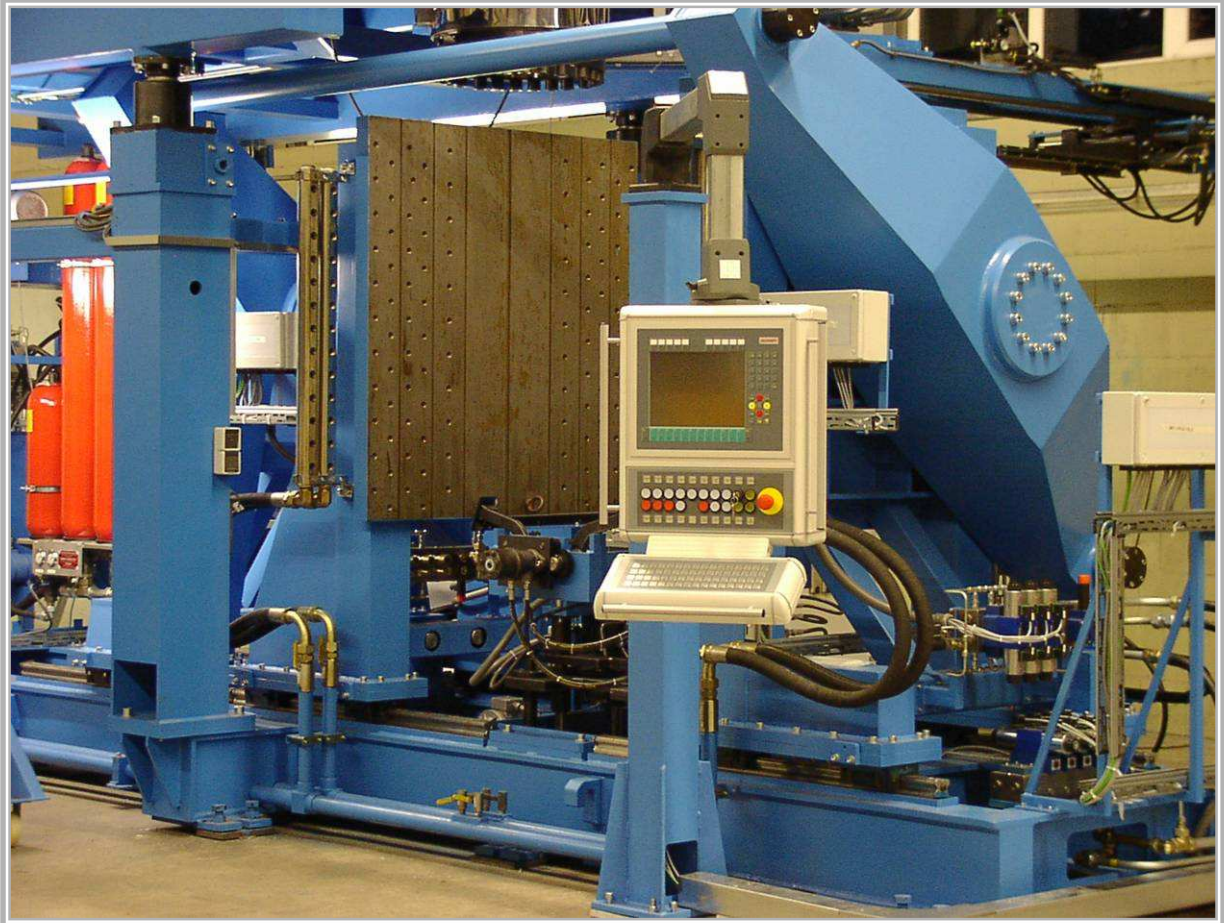
Offer to  
c/o:  
pictures of B-750, page 4/5  
BEMACO B 750-120/A-20  
Ident-Nr.:



**BEMACO ENGINEERING**

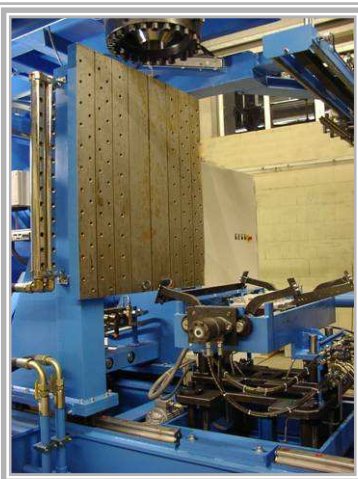
...NEWEST TECHNOLOGY FOR USED BLOWMOULDING MACHINES

# B E M A C O E N G I N E E R I N G B - 7 5 0

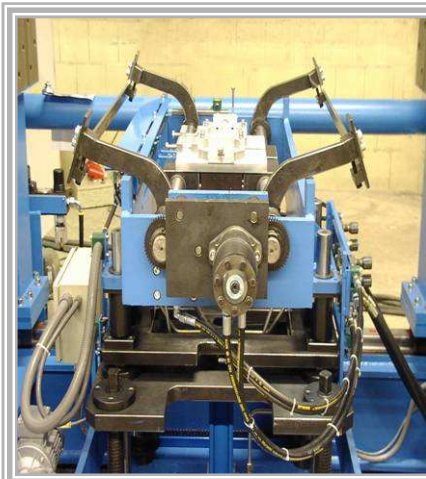


**B-750: clamping system with spreader device, parison welding unit and operator panel**

**B-750: clamping system**



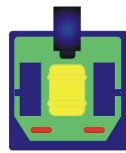
**B-750: spreader and welding unit**



**B-750: Operator panel**



Offer to  
c/o:  
pictures of B-750, page 5/5  
BEMACO B 750-120/A-20  
Ident-Nr.:



**BEMACO ENGINEERING**

...NEWEST TECHNOLOGY FOR USED BLOWMOULDING MACHINES

# B E M A C O E N G I N E E R I N G B - 7 5 0



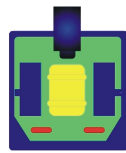
**B-750: view of extruder platform**

**B-750: 20 liter accu head**



**B-750: view into 20 liter accu head**





# O F F E R

According to our terms of business we offer as follows, without obligation, subject to prior sale:

## 1 new blow moulding machine B 750

|                                |   |
|--------------------------------|---|
| Manufacturer:                  | <b>BEMACO ENGINEERING</b>   |
| Type:                          | <b>B 750, up to 220 liter Volume, (depending on article design)</b> |
| Year of construction:          | <b>new</b>  |
| Extruder type:                 | <b>S 120 / 25d</b>  |
| Extrudersize:                  | <b>120 / 25d, grooved barrel, HDPE</b>                              |
| Extrudermotor:                 | <b>150 kw, DC-drive</b>   |
| Extruder heaters:              | <b>40 kw, 5 zones with fan cooling</b>                              |
| Extruder capacity:             | <b>up to 550 kgs/h HDPE (50 virgin/50 regrind)</b>                  |
| Control cabinet:               | <b>Beckhoff control</b>   |
| Head type:                     | <b>Kautex 20 Liter accuhead</b>                                     |
| Head system:                   | <b>double heartcurves, Fifo system, dia.: 120 – 350 mm</b>          |
| Platen length:                 | <b>1.400 mm, (mould length max. 1.500 mm)</b>                       |
| Platen width:                  | <b>1.300 mm</b>   |
| Mould depth:                   | <b>2 x 350 mm (min)</b>   |
| Mould weight:                  | <b>2 x 1.550 kgs</b>  |
| Clamping force:                | <b>100 tons</b>   |
| Daylight opening:              | <b>min: 700 mm, max: 1. 700 mm (1 x 1.000 mm cylinder stroke)</b>   |
| Electronic parison programmer: | <b>100 points, included in Beckhoff control</b>                     |
| Parison length controller:     | <b>included in Beckhoff control</b>                                 |
| Parison spreader:              | <b>spreading device with parison welding unit</b>                   |
| Take out unit:                 | <b>automatic gripper system</b>                                     |

### Standard equipment:

- Proportional control for mould movement (open/close)
- Proportional control for parison ejection (push-out) and wallthickness control
- Proportional pre blowing and blowing
- Proportional needle blowing, 2 x
- Mold part movement, 2 x
- Extruder platform could be completely defer hydraulically in extruder length axis for quick mould changes by crane or forklifter
- Machine equipped for manufacturing technical parts

Price for above described machine, ex works:

**on demand**