

Offer to
c/o:
pictures of B-750, page 1/5
BEMACO B 750-120/A-20
Ident-Nr.: 2009_09_04



BEMACO ENGINEERING

...NEWEST TECHNOLOGY FOR USED BLOWMOULDING MACHINES

BEMACO ENGINEERING B - 750



BLOW MOULDING MACHINE B-750

BEMACO ENGINEERING GMBH & Co. KG

Benteler Straße 31
33449 Langenberg / Germany
Tel.: +49 (0) 52 48-81 11 00
Fax: +49 (0) 52 48-81 11 09

info@bemaco-engineering.de
www.bemaco-engineering.de

Offer to
c/o:
pictures of B-750, page 2/5
BEMACO B 750-120/A-20
Ident-Nr.: 2009_09_04



BEMACO ENGINEERING

...NEWEST TECHNOLOGY FOR USED BLOWMOULDING MACHINES

B E M A C O E N G I N E E R I N G B - 7 5 0



BLOW MOULDING MACHINE B-750

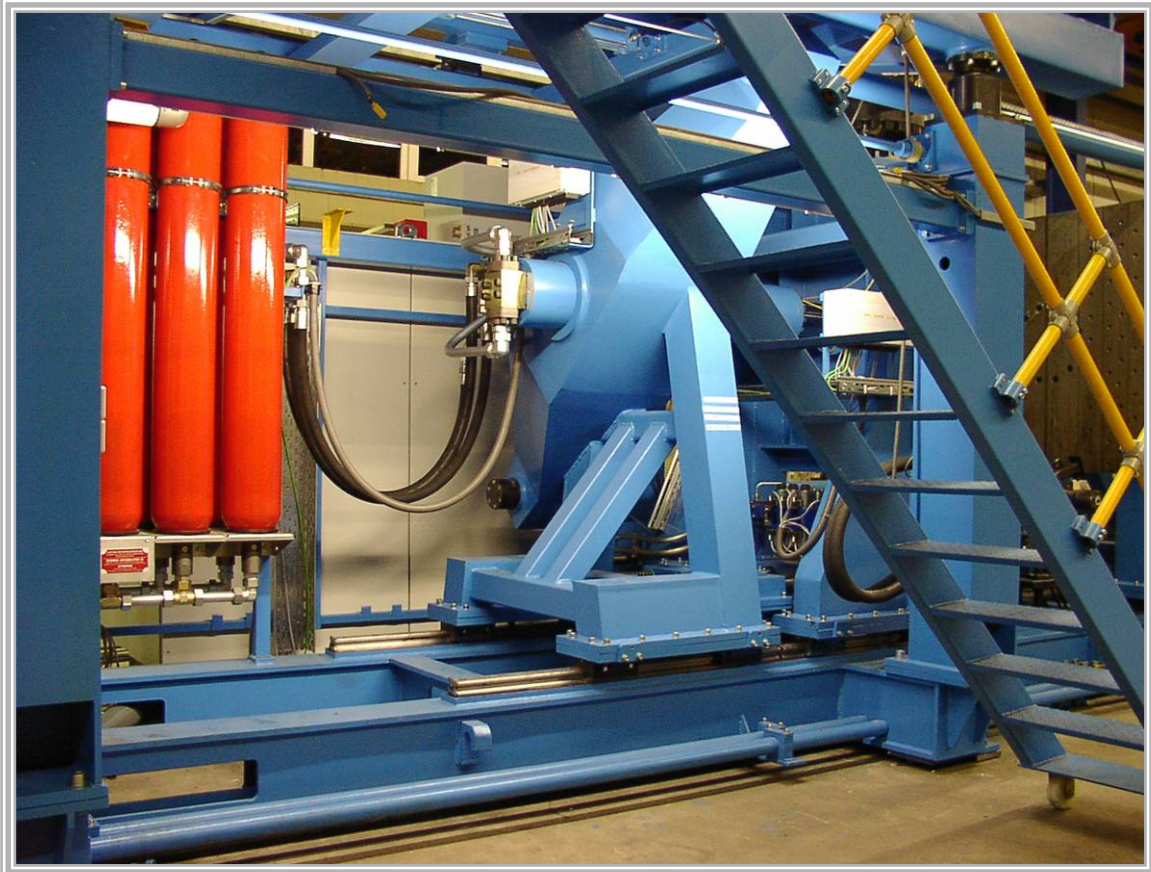
BEMACO ENGINEERING GMBH & Co. KG

Benteler Straße 31
33449 Langenberg / Germany
Tel.: +49 (0) 52 48-81 11 00
Fax: +49 (0) 52 48-81 11 09

info@bemaco-engineering.de
www.bemaco-engineering.de



B E M A C O E N G I N E E R I N G B - 7 5 0

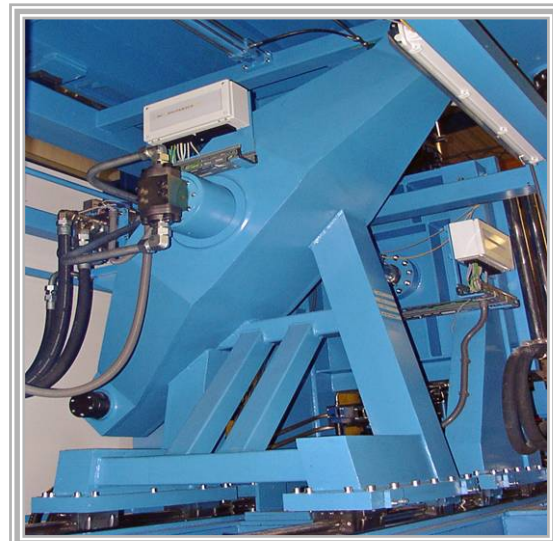


B-750: view inside machine frame

B-750: hydraulic with accumulators

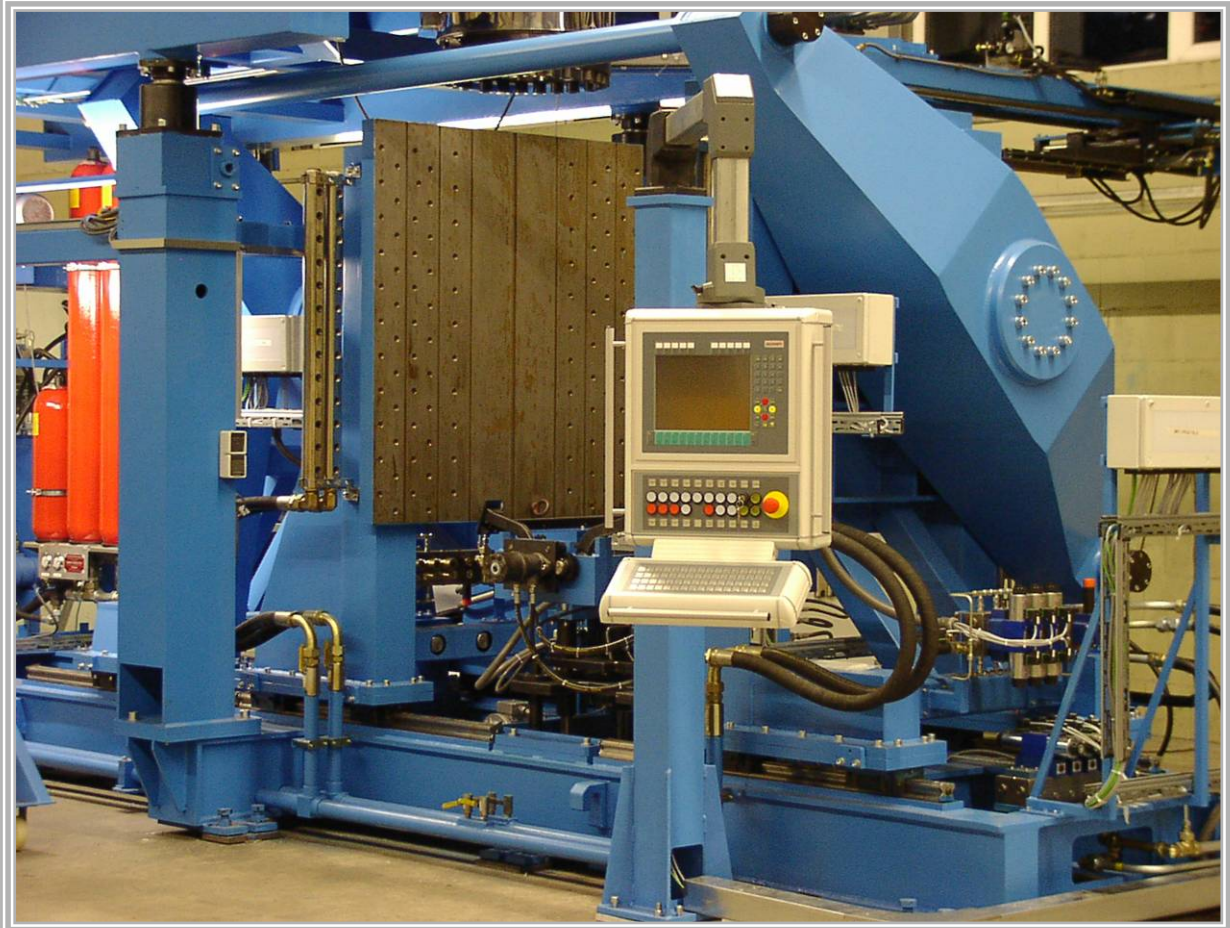


B-750: clamping unit (detail view)





B E M A C O E N G I N E E R I N G B - 7 5 0

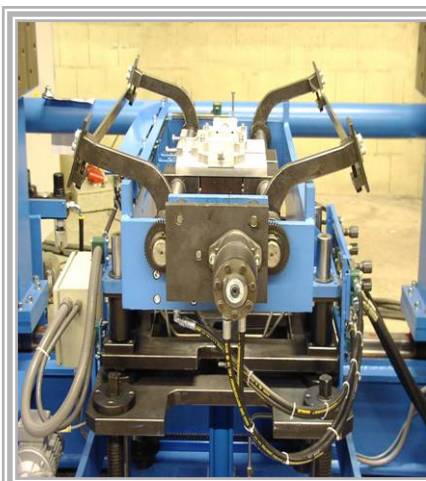


B-750: clamping system with spreader device, parison welding unit and operator panel

B-750: clamping system



B-750: spreader and welding unit



B-750: Operator panel





B E M A C O E N G I N E E R I N G B - 7 5 0



B-750: view of extruder platform

B-750: 20 liter accu head



B-750: view into 20 liter accu head





O F F E R

According to our terms of business we offer as follows, without obligation, subject to prior sale:

1 new blow moulding machine B750

Manufacturer:	BEMACO ENGINEERING
Type:	B 750, up to 220 liter Volume, (depending on article design)
Year of construction:	new
Extruder type:	S 120 / 20d
Extrudersize:	120 / 20d, grooved barrel, HDPE
Extrudermotor:	125 kw, DC-drive
Extruder heaters:	32 kw, 4 zones with fan cooling
Extruder capacity:	up to 450 kgs/h HDPE (70/30 mixture)
Control cabinet:	Beckhoff control (optional: Moog TMC- 4 control)
Head type:	Bemaco-Engineering 20 Liter accuhead
Head system:	double heartcurves, Fifo system, dia.: 120 – 350 mm
Platen length:	1.400 mm, (mould length max. 1.500 mm)
Platen width:	1.300 mm
Mould depth:	2 x 350 mm (min)
Mould weight:	2 x 1.550 kgs
Clamping force:	850 KN (could be increased if necessary)
Daylight opening:	min: 700 mm, max: 1. 700 mm (1 x 1.000 mm cylinder stroke)
Electronic parison programmer:	100 points, included in Beckhoff control
Parison length controller:	included in Beckhoff control
Parison spreader:	spreading device with parison welding unit
Take out unit:	automatic gripper system

Standard equipment:

- Proportional control for mould movement (open/close)
- Proportional control for parison ejection (push-out) and wallthickness control
- Proportional pre blowing and blowing
- Proportional needle blowing, 2 x
- Mold part movement, 2 x
- Extruder platform could be completely defer hydraulically in extruder length axis for quick mould changes by crane or forklifter
- Machine equipped for manufacturing technical parts

Price for above described machine, ex works: